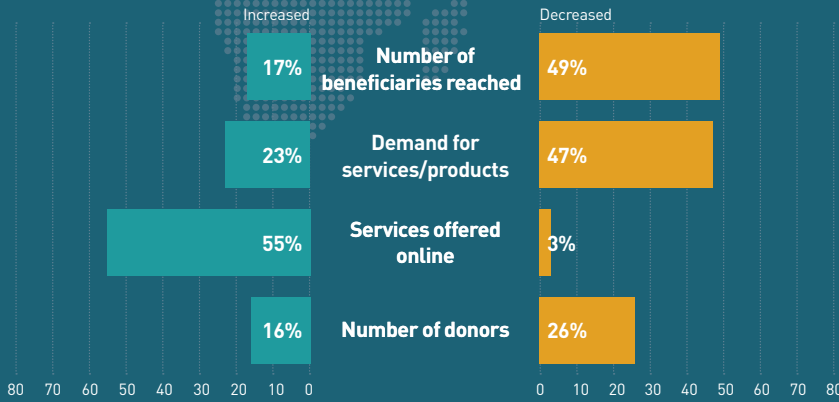
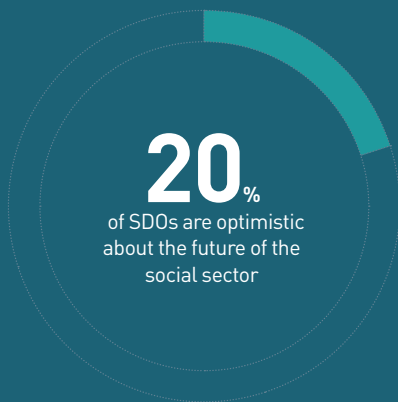


JAPAN

Impact of Covid-19 on SDOs



Social sector outlook



Primary areas of work

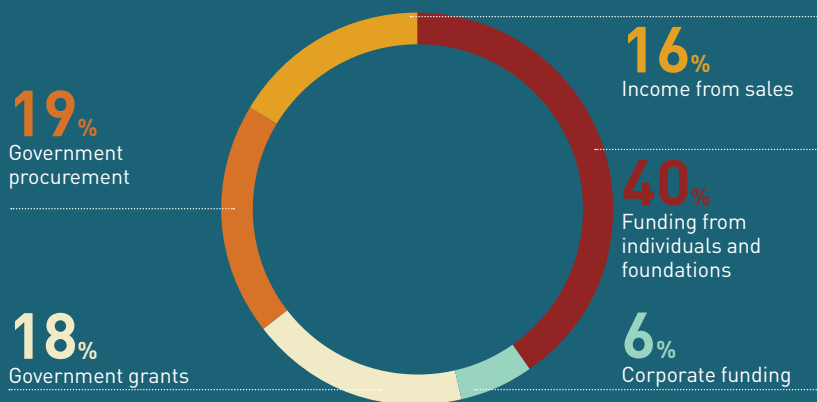


Prevalence of funding sources*

Foreign funding	7%
Funding from individuals and foundations	82%
Corporate funding	48%
Income from sales	61%
Government grants	66%
Government procurement	51%

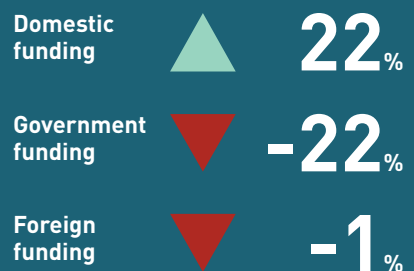
* Percentage of SDOs receiving each type of funding.

Proportion of SDO budget by funding source*



* Based on data provided by SDOs for the last financial year.

Changes in sources of funding: 2022 vs 2020*



* For the purpose of this graphic, domestic funding combines: funding from individuals and foundations, corporate funding and income from sales. Government funding combines income from procurement contracts and government grants.

Individual charitable giving



Top 2 reasons for low levels of giving



Trust in SDOs



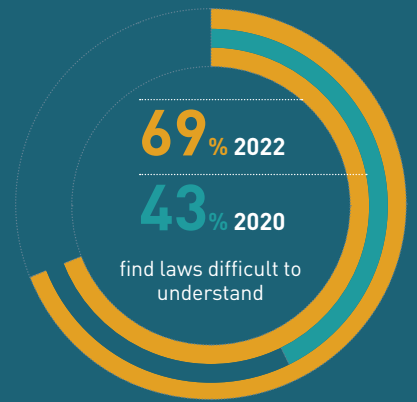
Difficulty in recruiting staff



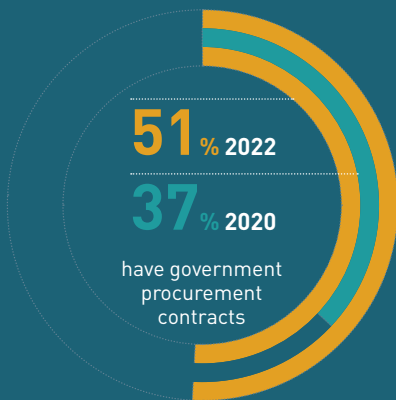
Corporate volunteering



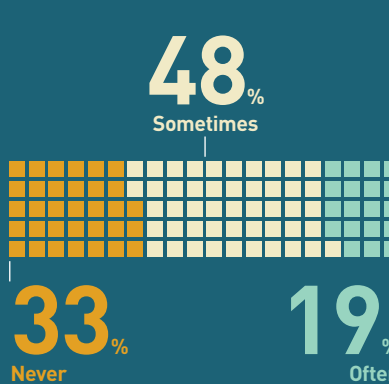
Ease of understanding laws



Government procurement



SDOs involved in policy consultations



Explore and compare data on our microsite.

