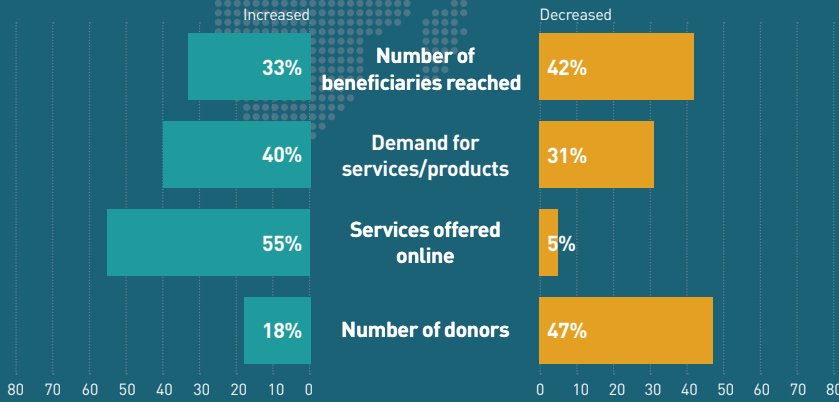


# ASIA<sup>\*#</sup>

\* Due to rounding, data may not totals may not add up to 100%.

# Data for 2022 is based on findings from 17 economies, and data for 2020 is based on findings from 18 economies.

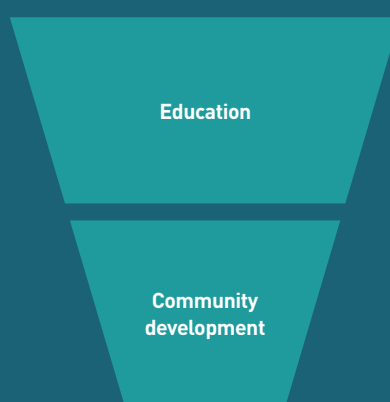
## Impact of Covid-19 on SDOs



## Social sector outlook



## Primary areas of work

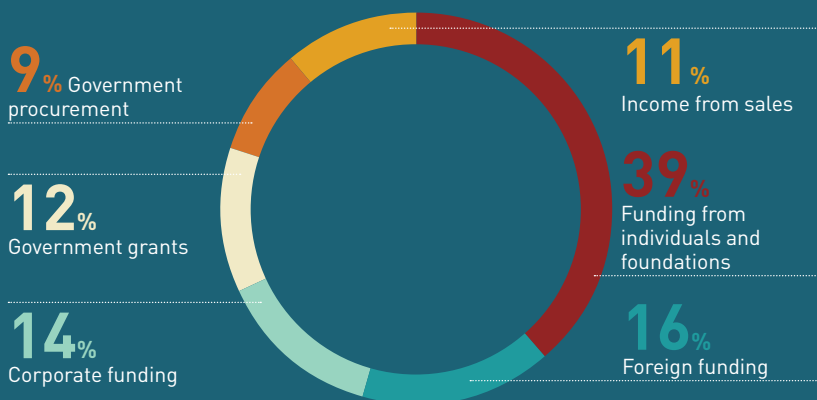


## Prevalence of funding sources\*

Foreign funding	39%
Funding from individuals and foundations	77%
Corporate funding	54%
Income from sales	41%
Government grants	44%
Government procurement	30%

\* Percentage of SDOs receiving each type of funding.

## Proportion of SDO budget by funding source\*



\* Based on data provided by SDOs for the last financial year.

## Changes in sources of funding: 2022 vs 2020\*



\* For the purpose of this graphic, domestic funding combines: funding from individuals and foundations, corporate funding and income from sales. Government funding combines income from procurement contracts and government grants.

### Individual charitable giving



### Top 2 reasons for low levels of giving



### Trust in SDOs



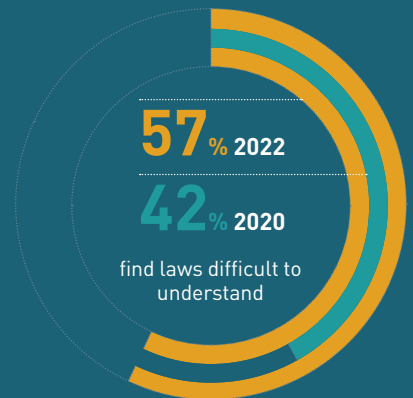
### Difficulty in recruiting staff



### Corporate volunteering



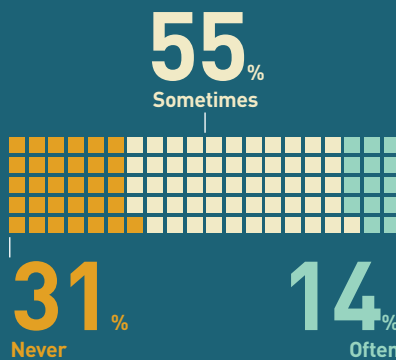
### Ease of understanding laws



### Government procurement



### SDOs involved in policy consultations



Explore and compare data on our microsite.

